

Bond Document

GJXDM Information Exchange Package
Documentation
Generated: June 06, 2006

Table of Contents

<u>TABLE OF CONTENTS</u>	2
<u>1. PURPOSE AND SCOPE</u>	4
1.1. Scope	4
1.2. Purpose:	4
<u>2. LIST OF ARTIFACTS</u>	4
<u>3. XML SCHEMAS</u>	4
<u>4. ADDITIONAL IEP PROVISIONS</u>	4
<u>4.1. Additional Property Definitions</u>	5
Document	5
Document Sections	5
Components	5
Elements	7
Document Local XML Types	13
Document Local XML Elements	14
<u>4.2. Minimal Properties Set</u>	16
<u>4.3. Additional Business Rules</u>	16
4.3.1. Description	16
4.3.2. Data Exchanges	16
<u>5. SAMPLES</u>	18
<u>6. DEVELOPMENT</u>	18
6.1. Participants	18
6.2. Process:	19
<u>6.3. Development Artifacts:</u>	19
6.3.1. Data Model Diagram	19
6.3.2. Source Documents	20
6.3.3. Revision History:	20
<u>7. TESTING AND CONFORMANCE</u>	20

8. FEEDBACK.....20

1. Purpose and Scope

1.1. Scope

National

1.2. Purpose:

2. List of Artifacts

1. GJXDM Subschema
2. Extension Schema
3. Document Schema
4. XML Document Instance
5. Data Model Diagram
6. XMI Export
7. XML Mappings
8. GIEP Description

3. XML Schemas

GJXDM Version: 3.0.2

Schema Type	File Name
Subset Schema	Bond Document Schema Package\jxdm\3.0.2\jxdm.xsd
Extension Schema	Bond Document Schema Package\nc.xsd
Document Schema	Bond Document Schema Package\Bond Document.xsd

4. Additional IEP Provisions

4.1. Additional Property Definitions

Document

Name	Description
Bond Document	

Document Sections

Name	Description
Authorizing Person	A government official employed by a court, prosecutor, public defender, probation or other criminal justice agency.
Bond Details	
Bond Officer	The bond officer assists with the preparation of the bond document and made the recommendation for the bond amount. May be part of pre-trial court services.
Case	An agency or court record that acts as a container for charges and other information relating to a subject(s).
Charge	Details about an allegation that a person has committed a specific offense.
Court	Court that has current jurisdiction over the case.
Custodial Facility	
Defendant Representation	Persons who has the authority to represent a defendant (e.g. Guardian Ad Litem, Defense Attorney, Public Defender, Pro Se).
Judicial Officer	A judicial official associated with a court case.
Message Metadata	Describes the request or the action of the document.
Next Court Event	Information about the next court event such as the initial appearance, etc.
Subject	The person or organization against which the charge is directed.
Surety Organization	An organization responsible for the bail amount if the bonded individual does not show up for court.
Surety Person	Person responsible for bail if the bonded individual does not show up for court.

Components

Name	Description
Address	The identification of a physical location associated with a person or organization.
Agency Identifiers	The identification of the government agency initiating the action.

Bond Document Information Exchange Package Definition

Name	Description
Authorization	The digital signature, signature image, or signature block for the judicial officer issuing a court order.
Bail	Security, usually a sum of money, exchanged for the release of an arrested person as a guarantee of that person's appearance for trial.
Bond Deposit	Deposit given for the bond.
Bond Recipient	The person responsible for taking the bond money and making the deposit.
Bond Witness	Person who witnesses the payment of a bond.
Business Address	A location of an organization.
Charge Disposition	Contains disposition information that is as a result of an agency or court action, such as dismissal or court finding.
Charge Qualifier	Legal modifier that qualifies the charge (e.g. conspiracy, attempted, solicitation). The qualifier may change the classification of the charge.
Contact	Telephone and other contact information for an organization or person.
Court Case Identifiers	Reference numbers or other identifying information regarding a court case.
Court Contact Information	
Court Identifiers	Reference numbers or other identifying information regarding a court or court branches.
Employment	The last known employer of an individual.
Government Issued Identification	Any form of identification issued by a government agency.
Hearing Information	Information on the date, time, and location of the next court event.
Jurisdiction	The legal authority of a court.
Justice Person Identifiers	Identifiers issued to people who are associated with a justice agency (e.g. badge number, bar number, employment name).
Legal Authority for Offense	Information about the underlying substantive offense.
Message Headers	Contains metadata with information about the sender of the message, actions to be taken upon receipt, etc.
Name	The name of the person.
Offense Code	Specific codes that have been established for the purpose of mapping the offense to a statute, ordinance, or categorization (e.g. Virginia Crime Code, Minnesota Offense Code, NC AOC Offense Codes).
Organization Identifier	An identifier of an organization based on the type of organization it is, e.g., for a school, this would be a school identifier, for a lien holder, this would be a lien holder identifier, for a court, this would be a court identifier.
Other Case Identifiers	Agency case identifiers assigned by law

Bond Document Information Exchange Package Definition

Name	Description
	enforcement, prosecutor, defense representation or others.
Penalty Enhancer	Anything that enhances the penalty of the underlying crime. Examples include crime committed within 1000 feet of a school, committed with a gun, gang violence.
Person Identifiers	Identifying numbers for an individual such as social security number, or FBI or state criminal ID number.
Physical Characteristics	Identifying scars, marks, tatoos and other distinguishing physical characteristics. This can include missing limbs, large ears, etc.
Physical Descriptors	The physical description of a person.
Residential Address	Details about an address for a place where a person lives.
Special Requirements	Requirements that are in addition to the charge penalties and may be ordered either by the court or another agency (e.g. sex offender registration, mandatory DNA collection, HIV testing, license revocation, license revocation hearing, State Concealed Weapon Hearing, Post-Release Supervision, Ignition Lock Device).
Statutory Charge Penalty	Legal penalties proscribed for a charge.
Surety Details	
Violation Location	Place where the violation occurred
Work Address	Address of an employer

Elements

Name	Description
Advisory Notification Agency	The name of the agency(s) to which the court must provide notification (e.g. notify DMV of a DUI conviction that may lead to drivers license revocation, firearms licensing agency).
Agency Case Identifier	A unique identifier assigned by an agency (e.g. law enforcement, probation, parole, prosecution) to track a case.
Agency Code Identifier	An alphanumeric code used and assigned locally to agencies to uniquely identify them within that jurisdiction.
Agency Name	Name of a justice agency (e.g. police department, law firm, court).
Agency ORI	A unique identifier assigned to a justice-related organization by the National Crime Information Center. Sometimes referred to as ORI, ORI code, Originating Agency Code.
Agency Reporting Unit	Name of a work group or area in a local office.
Alternative Charge Indicator	Indicates a charge that offers an alternative to the primary charge. It is a second charge on the same count.

Bond Document Information Exchange Package Definition

Name	Description
Amended Disposition ID	Identifies the disposition that has been amended.
Amended Disposition Indicator	Indicates whether or not it is an amended disposition.
Amendment Reason	Text that describes the reason for the amendment.
Area Code	A dialing code for a state or province for phone numbers in the USA, Canada, Mexico, and the Caribbean.
Authority Identifier	The government entity that is responsible for maintaining the code (e.g. Fish and Game, DMV, Crime Commission, NCIC).
Bar Number	The attorney's unique identifier assigned by a state or bar association to an attorney authorized to practice law.
Bond Amount	Monetary amount set for the defendant's bail.
Bond Condition	Conditions that must be met to be released on bail.
Bond Issue Date	Date that bond is authorized by an authorized court official.
Bond Purpose	Example: appearance, performance.
Bond Tracking Number	
Bond Type	Type of bond used (e.g. cash, personal recog., 10%).
Bonding Agent Type	e.g. surety or property
Branch	Name of the branch of a court with facilities in multiple locations.
Building Designation	A number or letters assigned to identify a building in an address.
Case Caption	Official case title for a court record.
Case Category	For trial courts, there are five case categories, representing the highest level of classification: <ul style="list-style-type: none"> · Civil · Domestic Relations · Criminal · Juvenile · Traffic, Parking, & Local Ordinance Violations
Case File Date	Date case was filed by the Clerk of the Court.
Charge Attribute	Additional information that notifies the court of special conditions (e.g. domestic violence, white collar crime, or court reporting requirements).
Charge Class	Severity of the charge (e.g., infraction, misdemeanor, felony).
Charge Code ID	Alphanumeric mapping identifier associated with the charges (e.g. State Crime Code, DMV code, NCIC Offense Code, DA Charge Code, Fish and Game, NIBRS).
Charge Description	Statutory text describing the offense committed by the defendant and how it applies to the cited

Bond Document Information Exchange Package Definition

Name	Description
	statute.
Charge Qualifier Description	Phrase or word that qualifies the charge (e.g. conspiracy to attempt, attempt, solicitation to attempt, party to crime, facilitate, principal, threat, aid and abet, accessory before the fact, accessory after the fact).
Charge Text	A narrative description of the facts and circumstances for which a statute is charged. In the event of a correctable offense, this may include text that describes the equipment (tail light, headlight, etc.) that requires fixing; if fixed, citation is dismissed
Charge Title	A summary heading of a crime or offense (Third Degree Assault)
Charge Tracking Number	A number that uniquely identifies a charge. This number may result from a concatenation of a series of numbers.
Correctable Offense Indicator	An indicator that equipment (tail light, headlight, etc.) requires fixing; if fixed, citation is dismissed
Count Number	A unique identifying number assigned to a particular charge by an arresting agency, prosecuting attorney, or a court for case management purposes.
Country Name	Name of the country.
County Name	The name of the County or Parish.
Court Calendar Web Address	Link to the court's scheduling system
Court Case Number	A unique identifier assigned to a court case.
Court ID	A unique identifier assigned to a court.
Court Name	Official name of the court.
Court ORI	A unique identifier assigned by the National Crime Information Center to a court.
Court Transfer Date	A date that the case has been bound over or had a change of venue.
Court Type	Type or level of court that has jurisdiction (e.g., county court, municipal court, superior court).
Courtroom	
Date of Birth	A person's date of birth.
Deposit Amount	Amount of the bail deposit.
Digital Image	A photograph rendered into digital format.
Digital Signature Certificate	Digital signature (or public key digital signature) is a type of method for authenticating digital information analogous to ordinary physical signatures on paper, but implemented using techniques from the field of public key cryptography.
Digitized Signature Image	Image of a persons signature.

Bond Document Information Exchange Package Definition

Name	Description
Disposition Date	Date of a disposition of a charge.
Disposition Description	The current disposition or outcome of a charge (e.g. conviction, acquittal, dismissed, deferrals).
Disposition Tracking Number	Unique identifier for a disposition.
Disposition Type Code	A code identifying the disposition or outcome of a charge.
District	Name or identifier of a judicial circuit or district within a court system.
Division	A sub-unit of a court responsible for a particular area of law or legal matters (e.g., criminal, juvenile, civil, traffic).
Email Address	An email address of a person or organization.
Employer Name	The name of the person organization or corporation that the person is employed by.
Employment Identification Number	A unique identifier assigned to an employee.
Employment Position Name	A title related to a person's profession (e.g. District Attorney, Sheriff, Judge).
Ethnicity	A person's ethnicity.
Exchange Date	Document transmission date.
Exchange Identifier	Exchange tracking number.
Exchange Time	Document transmission time.
Expiration Date	The date a document or order expires.
Eye Color Code	A National Crime Information Center code representing a person's eye color.
FBI Number	A unique number assigned to an individual by the FBI based on submitted fingerprints.
Fax Number	A facsimile number of a person or organization.
First Name	First or given name of a person.
Floor	The floor number of a particular building.
GPS Coordinates	Coordinates for a location
Government Issued Identification Number	Unique identifier assigned by the issuing organization.
Hair Color Code	A National Crime Information Center code representing a person's hair color.
Hearing Date	
Hearing Start Time	
Height Measure	A person's height in feet and inches based on the National Crime Information Center standards.
Identification Number Type	The identification type (e.g. passport, driver's license, military ID, state issued identification).
Inmate Identifier	A person-based number assigned by the jail or Department of Corrections. This may include an inmate locator identifier.
Issuing Country	Indicates the country that the identification was issued from.
Issuing Jurisdiction	The state or other issuing authority (e.g. DOD) from which a form of identification was issued.
Judicial Officer Identifier	A state or locally generated alphanumeric that is assigned to judicial personnel.
Last Name	The last or surname of a person.

Bond Document Information Exchange Package Definition

Name	Description
Local Person Identifier	A unique number assigned to an individual by an agency or local law enforcement based on submitted fingerprints or other less precise methods.
Location Description	Captures all non-formatted information to identify a location. May represent street address and city, direction of travel, mile markers, cross roads, location on body, etc.
Location Unit Identifier	Identifies a specific room in a building (e.g. apartment number, room number).
Mark Type Code	The National Crime Informaion Center code indicating the type of physical feature (e.g. tattoo, scar, moles, piercings).
Message Action Code	Indicates what actions the system should perform on the message (e.g. National Crime Information Center message key).
Message Type	The type of message (e.g. Prosecutor Filing, Court Filing, Law Enforcement Filing).
Middle Name	Middle name of a person.
Moniker	Nickname or alternative identifier.
Municipality Name	Name of a city, township, etc.
NCIC Charge Code	The NCIC code assigned to the criminal case charge.
Name Prefix	A title or honorific used by a person (e.g., Dr., Judge, General, Ms.).
Name Suffix	A component that is appended after the family name that distinguishes members of a family with the same given, middle, and last name (e.g., Jr, Sr, III), or otherwise qualifies the name (e.g., MD, LLD, PhD).
Occupation Type Code	A code that identifies a general category or type of employment.
Occupation Type Text	A general category or type of employment.
Offense Date	Date an offense occurred or began (if offense took place over a period of time). AKA crime, incident, or violation date.
Offense Date Description	Text description of a range or period for an offense (e.g. occured over the period of a month).
Offense Description	Statement of facts derived from the crime (e.g. the narrative from a police report).
Offense End Date	Date ending the period of time during which an offense occurred.
Offense End Time	Time that an offense ended.
Offense Time	Violation Time
Offense Type Code	Category of offense type, e.g. check box indicating type of citation, i.e., speeding, operating under the influence, driver license violation, safety belt infraction, offense code

Bond Document Information Exchange Package Definition

Name	Description
	number.
Organization DBA Name	Name that the organization is doing business under.
Organization Legal Name	The official name of an organization as listed on the IRS Letter of Determination
Organization Name	A name of an organization.
Originating Agency ORI	A unique identifier assigned by the FBI to the agency initiating the exchange.
Penalty Class	Class Label that could be defined through sentencing guidelines (e.g. Class A, Class B, etc.).
Penalty Description	The legal description of a penalty.
Penalty Enhancer Description	A legal description that increases the penalty of the underlying crime.
Penalty Enhancer Title	A synopsis of the penalty enhancer.
Person Full Name	Full name of a person. This may be used to accomodate situations where a person may have more than three names.
Plea Type Text	Guilty, not guilty.
Postal Code	Postal zip code in an address.
Postbox Number	PO Box Number.
Race Code	The National Crime Information Center code identifying a person's race.
Reason Type Text	Contains information about why a disposition has been amended.
Receipt Number	An alphanumeric unique identifier that uniquely identifies receipt of payment.
Representation Type Code	Identifies the type of representation (e.g. court appointed, GAL, retained, Pro Se).
Secondary User ID	A seperate login for an electronic exchange.
Sex Code	The National Crime Information Center code indicating a person's sex.
Signature Block	An electronic signature imputed to a text via one or more of several means (e.g. //John Doe/Magistrate).
Skin Tone Code	A National Crime Information Center code identifying the color of a person's skin.
Social Security Number	A unique identifer assigned to an individual by the Social Security Administration.
Special Requirement Description	Description of a particular requirement or restriction(e.g. could not hold public office, HIV testing, sex offender registration, DNA collection).
State Code	Postal Code of the state in an address.
State ID Number	A unique number assigned to an individual by a state based on submitted fingerprints.
Statute Code	Alphanumeric reference to a section or category within a charge code book (e.g. in VC123.23(a), the VC portion is the statute code).

Bond Document Information Exchange Package Definition

Name	Description
Statute Enactment Date	Date a particular statute became law.
Statute Number	Alphanumeric reference indicating the statute violated within a charge code book (e.g. in VC123.23(a), the 123.23(a) portion is the statute number).
Street Name	A name of a street.
Street Number	A number that identifies a particular unit or location within a street.
Street Post Directional	A direction that appears after a street name.
Street Pre Directional	A direction that appears before a street name.
Street Type	e.g. Street, Lane, Blvd.
Submission Date	The date that the originating agency sent the exchange.
Submission Time	The time that the originating agency sent the exchange.
Telephone Number Extension	Additional numbers to be entered to direct a call to the appropriate place.
Telephone Country Code	An international telephone dialing code for a country.
Telephone Number	A full length telephone identifier.
Trial Type Text	A bench, jury of six, grand jury, or jury.
User ID	The User ID on the system originating the exchange.
Victim Rights Offense Indicator	The statutory requirements for victim notification.
Violation Zone Type	The type of the special incident zone if the incident occurs within a violation zone (e.g. construction, railroad, school, utility). Multiple zones may be selected.
Weight Measure	A person's weight identified in pounds.

Document Local XML Types

Name	Description
BondType (BondType)	
CaselfIdentifierType (SuperType)	
CaseOfficialType (CaseOfficialType)	
CaseType (CaseType)	Contains information about the case parties and filing date.
ChargeDispositionType (ChargeDispositionType)	
ChargeType (ChargeType)	A structure that describes details about a formal allegation that a specific person has committed a specific offense.
IncidentType (IncidentType)	A structure that describes details about the incident.
JudicialOfficialType (JudicialOfficialType)	A structure that contains information regarding the judge's or hearing officer's digital signature.
PersonSocialDetailsType (PersonSocialDetailsType)	A structure containing information regarding a person's social information such as the need

Name	Description
	for an interpreter.
PersonType (PersonType)	A structure that describes the inherent and frequently associated characteristics of a person.
SubjectType (SubjectType)	A structure that describes a person who is involved or suspected of being involved in an incident or criminal activity.

Document Local XML Elements

Name	Description
AdvisoryNotificationText (TextType)	Lists the outside agencies that must be notified.
AlternativeChargeIndicator	The indication of an alternative charge for a warrant.
AmendedDispositionIndicator	Indicates whether or not it is an amended disposition.
AmendmentReasonText (TextType)	Text that describes the reason for the amendment to the charges.
AuthorizationBinary (BinaryType)	This is an indicator that denotes "true" if an authorization is present.
Bond (BondType)	Some form of property deposited or pledged to a court in order to persuade it to release a suspect from jail, on the understanding that the suspect will return for trial or forfeit the bail.
BondDepositDepositAmount (NumericType)	Amount of the bail deposit.
BondDepositReceiptNumber (TextType)	An alphanumeric unique identifier that uniquely identifies receipt of payment.
BondIssueDate	
BondIssuer.Person (PersonType)	The bond officer assists with the preparation of the bond document and made the recommendation for the bond amount. May be part of pre-trial court services.
BondPurposeText (TextType)	Example: appearance, performance.
BondRecipient (PersonType)	The person responsible for taking the bond money and making the deposit.
BondSuretyOrganization (OrganizationType)	An organization responsible for the bail amount if the bonded individual does not show up for court.
BondSuretyPerson (PersonType)	Person responsible for bail if the bonded individual does not show up for court.
BondWitness (PersonType)	Person who witnesses the payment of a bond.
Case (CaseType)	Information about the case.
CaseDefenseAttorney (CaseOfficialType)	An attorney who defends a case.
CaselfIdentifier (CaselfIdentifierType)	An alphanumeric code used and assigned locally to agencies to uniquely identify them within that jurisdiction.
CaseTransfer (ActivityType)	Contains information about the transfer of a case as the result of change of venue, bind over, etc.

Bond Document Information Exchange Package Definition

Name	Description
Charge (ChargeType)	Details about a formal allegation against a specific person
ChargeApplicabilityStatute (StatuteType)	Description of the statute that defines the applicability of the degree of the charge being applied in the case.
ChargeDisposition (ChargeDispositionType)	Details about the results or processing of a charge.
ChargeFactorText (TextType)	Details about a factor involved that has an effect on a charge. Example: narcotics, computer, radar, domestic violence, employment, bias, injury, hazmat, CMV.
ChargeIncident (IncidentType)	Details about an incident that a subject is being charged on.
CourtOrderIssuingJudicialOfficial (JudicialOfficialType)	A judge or other judicial official that issued a court order.
DateDescriptionText (TextType)	Description of a period of time for a particular event.
DispositionID (IDType)	A unique identifier for a disposition.
EnhancementStatute (StatuteType)	Contains the details about the statute that enhances charges.
IncidentLocation (LocationType)	A location where an incident occurred.
LocalOffenseCodeID (IDType)	The government entity that is responsible for maintaining the code (e.g. Fish and Game, DMV, Crime Commission, NCIC).
PenaltyStatute (StatuteType)	The law or ordinance that the penalty was based upon.
PersonSocialDetails (PersonSocialDetailsType)	A person's social details such as whether they require an interpreter.
ReasonTypeText (TextType)	Contains information about why a disposition has been amended.
RelatedDispositionID (IDType)	Identifies the disposition that has been amended.
RepresentationTypeCode (IDType)	Identifies the type of representation (e.g. court appointed, GAL, retained, Pro Se).
SignatureBlock (TextType)	An electronic signature imputed to a text via one or more of several means (e.g. //John Doe/Magistrate).
SpecialRequirements (StatuteType)	Requirements that are in addition to the charge penalties and may be ordered either by the court or another agency (e.g. sex offender registration, mandatory DNA collection, HIV testing, license revocation, license revocation hearing, State Concealed Weapon Hearing, Post-Release Supervision, Ignition Lock Device).
Subject (SubjectType)	A person who is involved or suspected of being involved in an incident or criminal activity. This person may be the focus of an investigation or legal process, but is not necessarily the sole or primary focus.
TrialTypeText (TextType)	The type of trial e.g. A bench, jury of six, grand jury, or jury.
VictimRightsOffenseIndicator	Indicates there are statutory requirements for

Name	Description
	victim notification.
ViolationZoneTypeText (TextType)	Type of special incident zone (e.g. school zone, construction zone)

4.2. Minimal Properties Set

4.3. Additional Business Rules

4.3.1. Description

· The bond form is used in the exchange from the jail and from the court. Portions of it may be completed at different times based on the source of the document.

4.3.2. Data Exchanges

1. During the Investigation state, at the Arrest event, if subject is arrested & if bond is set the Jail sends the Bond Document to the Court for the Court Event event in the Investigation state.
2. During the Investigation state, at the Bond Event event, if subject is arrested & if bond is set the Court sends the Bond Document to the Jail for the Update Record event in the Investigation state.
3. During the Investigation state, at the Bond Event event, if subject is arrested & if bond is set the Court sends the Bond Document to the Defense for the Update Record event in the Investigation state.
4. During the Investigation state, at the Bond Event event, if subject is arrested & if bond is set the Court sends the Bond Document to the Prosecutor for the Update Record event in the Investigation state.
5. During the Investigation state, at the Court Event event, if subject is arrested & if bond is modified the Court sends the Bond Document to the Prosecutor for the Update Record event in the Investigation state.
6. During the Investigation state, at the Court Event event, if subject is arrested & if bond is modified the Court sends the Bond Document to the Defense for the Update Record event in the Investigation state.
7. During the Investigation state, at the Court Event event, if subject is arrested & if bond is modified the Court sends the Bond Document to the Jail for the Update Record event in the Investigation state.

8. During the Investigation state, at the Court Event event, if subject is arrested & if bond is exonerated the Court sends the Bond Document to the Jail for the Update Record event in the Investigation state.
9. During the Investigation state, at the Court Event event, if subject is arrested & if bond is exonerated the Court sends the Bond Document to the Defense for the Update Record event in the Investigation state.
10. During the Investigation state, at the Court Event event, if subject is arrested & if bond is exonerated the Court sends the Bond Document to the Prosecutor for the Update Record event in the Investigation state.
11. During the Investigation state, at the Court Event event, if subject is arrested & if bond is exonerated the Court sends the Bond Document to the Bonding Agent for the Update Record event in the Investigation state.
12. During the Investigation state, at the Court Event event, if subject is arrested & if bond is applied to other obligations the Court sends the Bond Document to the Bonding Agent for the Update Record event in the Investigation state.
13. During the Investigation state, at the Court Event event, if subject is arrested & if bond is applied to other obligations the Court sends the Bond Document to the Jail for the Update Record event in the Investigation state.
14. During the Investigation state, at the Court Event event, if subject is arrested & if bond is applied to other obligations the Court sends the Bond Document to the Defense for the Update Record event in the Investigation state.
15. During the Investigation state, at the Court Event event, if subject is arrested & if bond is applied to other obligations the Court sends the Bond Document to the Prosecutor for the Update Record event in the Investigation state.
16. During the Investigation state, at the Court Event event, if subject is arrested & if bond is forfeited the Court sends the Bond Document to the Prosecutor for the Update Record event in the Investigation state.
17. During the Investigation state, at the Court Event event, if subject is arrested & if bond is forfeited the Court sends the Bond Document to the Bonding Agent for the Update Record event in the Investigation state.
18. During the Investigation state, at the Court Event event, if subject is arrested & if bond is forfeited the Court sends the Bond Document to the Jail for the Update Record event in the Investigation state.

19. During the Investigation state, at the Court Event event, if subject is arrested & if bond is forfeited the Court sends the Bond Document to the Defense for the Update Record event in the Investigation state.

20. During the Investigation state, at the Court Event event, if subject is arrested & if bond is reinstated the Court sends the Bond Document to the Defense for the Update Record event in the Investigation state.

21. During the Investigation state, at the Court Event event, if subject is arrested & if bond is reinstated the Court sends the Bond Document to the Bonding Agent for the Update Record event in the Investigation state.

22. During the Investigation state, at the Court Event event, if subject is arrested & if bond is reinstated the Court sends the Bond Document to the Jail for the Update Record event in the Investigation state.

23. During the Investigation state, at the Court Event event, if subject is arrested & if bond is reinstated the Court sends the Bond Document to the Prosecutor for the Update Record event in the Investigation state.

5. Samples

6. Development

6.1. Participants

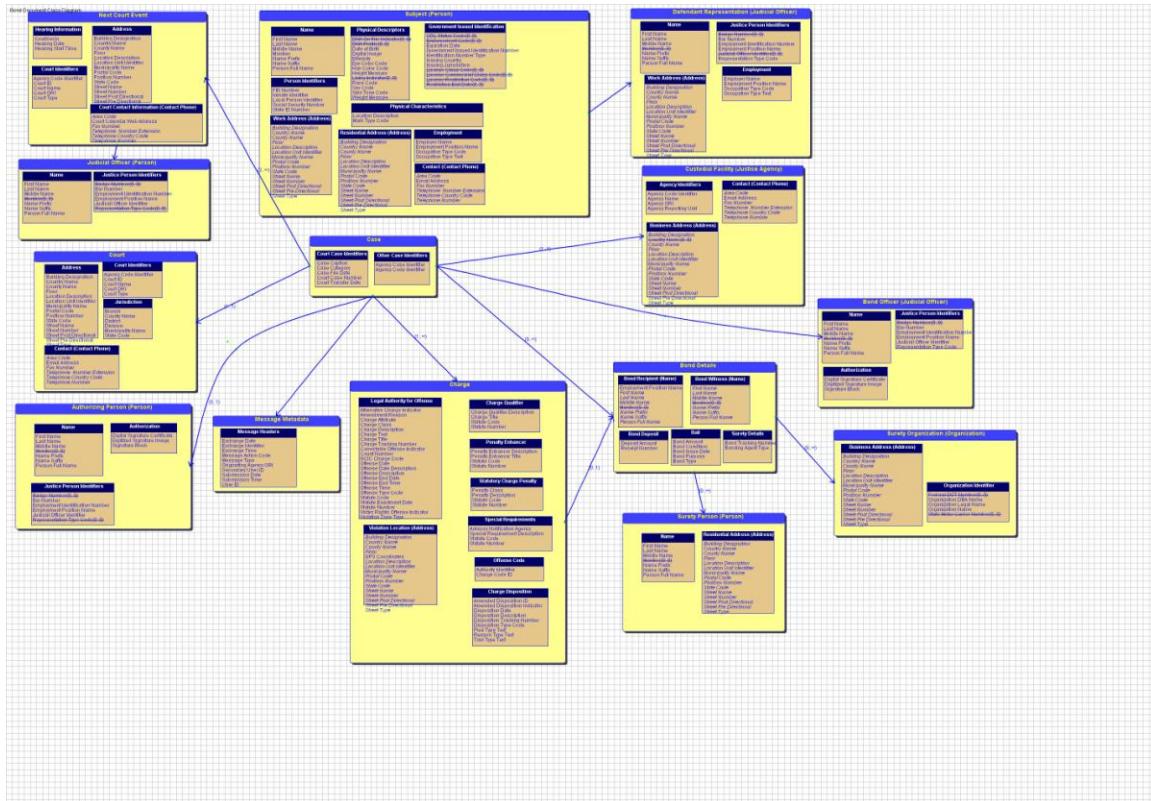
Richard Rowan - Minnesota Supreme Court
Winnie L. Webber - Lake County
Roger Banner - NC Administrative Office of the Courts
Thomas A. Larson- Norfolk Circuit Court
Shara Bunis - NCSC
Terrie Bousquin - Greacen Associates
James Harris – Orange County
Christine Kempf - Orange County
Patty Leither - State Court Administration
Stacey Kirk - Colorado Judicial Branch
Charlene Dolphin - Alaska Court System
Doug Bullock - Louisiana Supreme Court
Christopher Smith - VIQ Solutions Inc.
James F. Slater III - Massachusetts Executive Office of Public Safety
Jan Simkins - Colorado Bureau of Investigation
George Roundy - IJIS
Jonathan Jewett - IJIS

Aaron Gorrell – URL Integration
Dominique Caspers URL Integration
Lisa Vincent - Federal Bureau of Investigation (FBI)
Diane Schenker - Alaska Court System
Phil Witherspoon - Justice Systems, Inc.
Rory McKittrick - Unified Judicial System, State of South Dakota

6.2. Process:

6.3. Development Artifacts:

6.3.1. Data Model Diagram



6.3.2. Source Documents

6.3.3. Revision History:

7. Testing and Conformance

8. Feedback