



New Jersey Courts

Independence • Integrity • Fairness • Quality Service

JEFIS

Electronic Court Filing

Review Filing Service



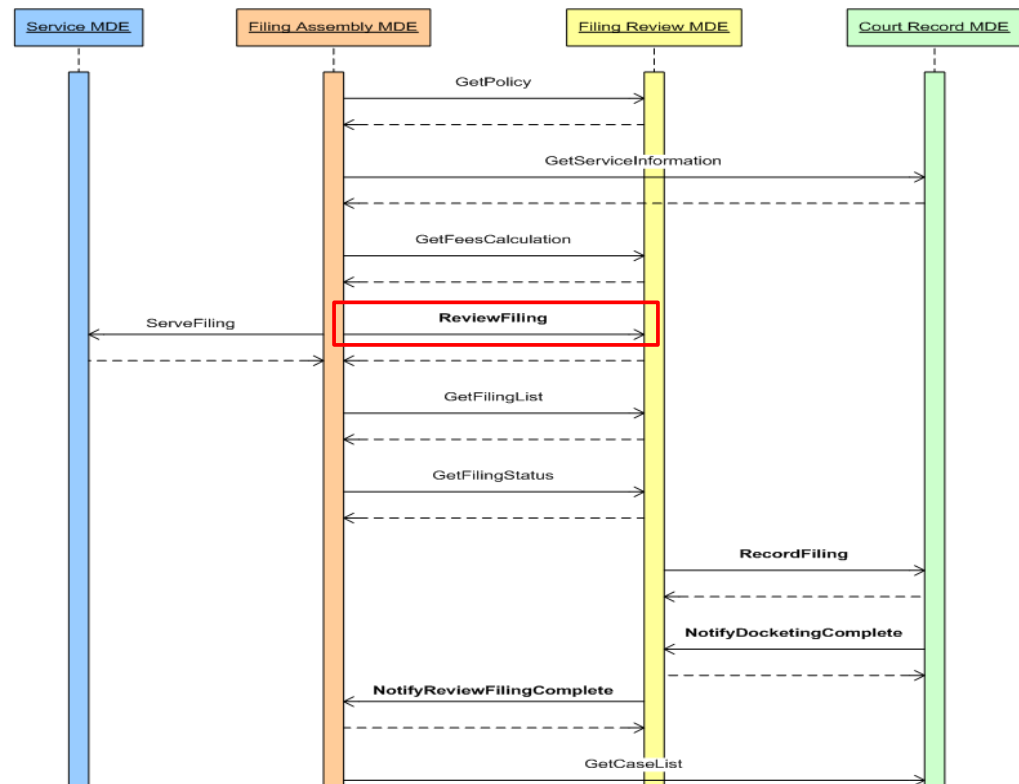
- JEFIS - Currently for Civil filings less than \$15k
- Mandatory for attorneys who file over 1,000 cases (May 2010)
- Over 3.6 million efilings received - 850,000 in 2009.
- 59% of initial complaints filed via JEFIS
- Registered attorneys have access to electronic case jackets and the case management system
- Expanding to Foreclosure cases (July 2010)

- The JEFIS eFiling Service is based on the OASIS Electronic Court Filing Specification V3.1
- Attorneys file “Review Filing” messages will be sent via a web service (June 2010) replacing SMTP/email
- The format of these messages follow the OASIS ECF 3.1 XML Specifications

The OASIS ECF 3.1 Specification defines the Review Filing Process

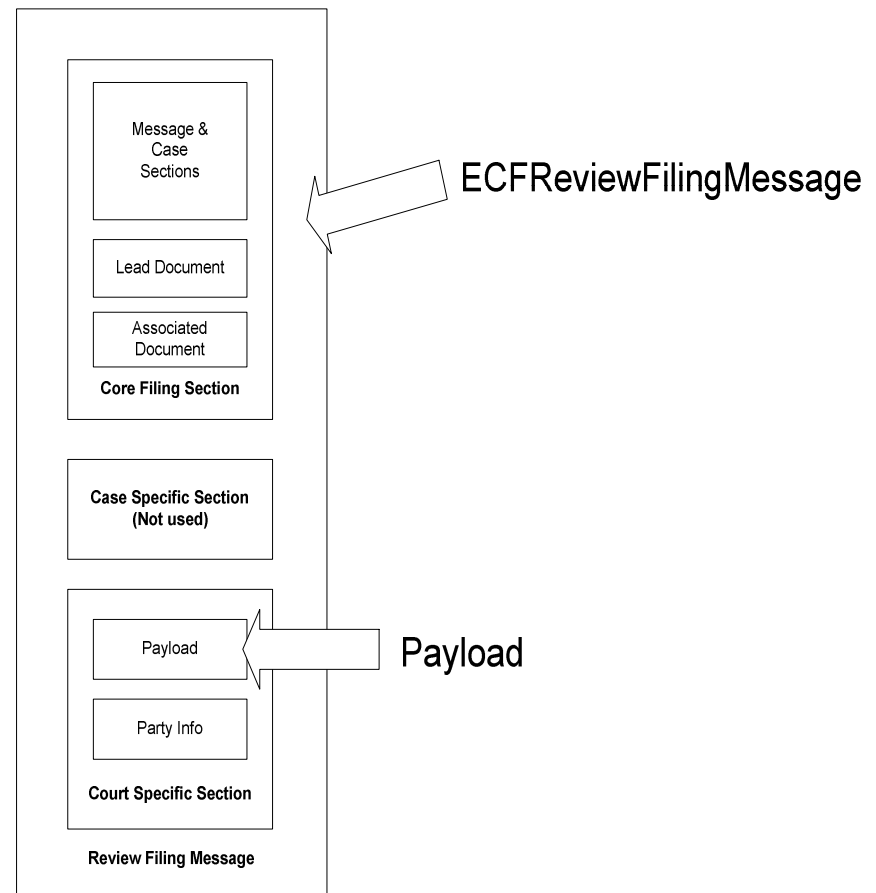
- The Review Filing service sends a message between the Filing Assembly MDE and Filing Review MDE

- JEFIS supports the Review Filing Message (circled in RED)
- The JEFIS Attorney Application is the Filing Assembly
- JEFIS Importing is the Filing Review MDE



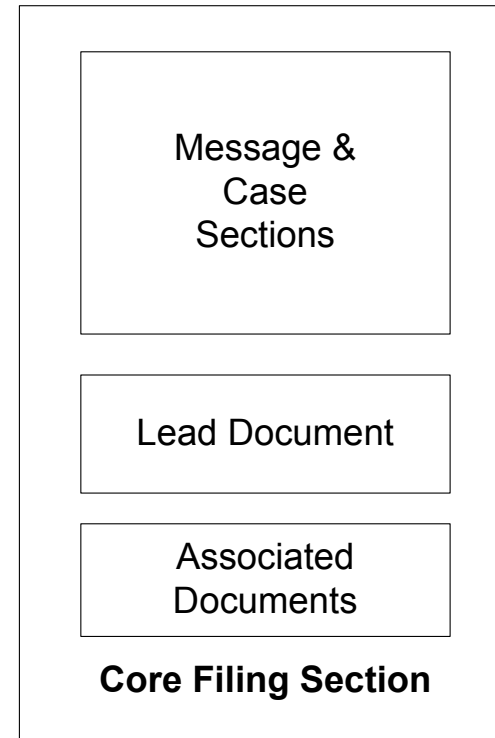
JEFIS ECF Review Filing Message Implementation

- The Review Filing Message is an XML Document contained in the ECFReviewFilingMessage object
- The Core Filing section of the message contains the documents and is used to route the message
- The Court Specific section contains the Payload and Party Info (Filing Data)
- The Case Specific section of the message is not used



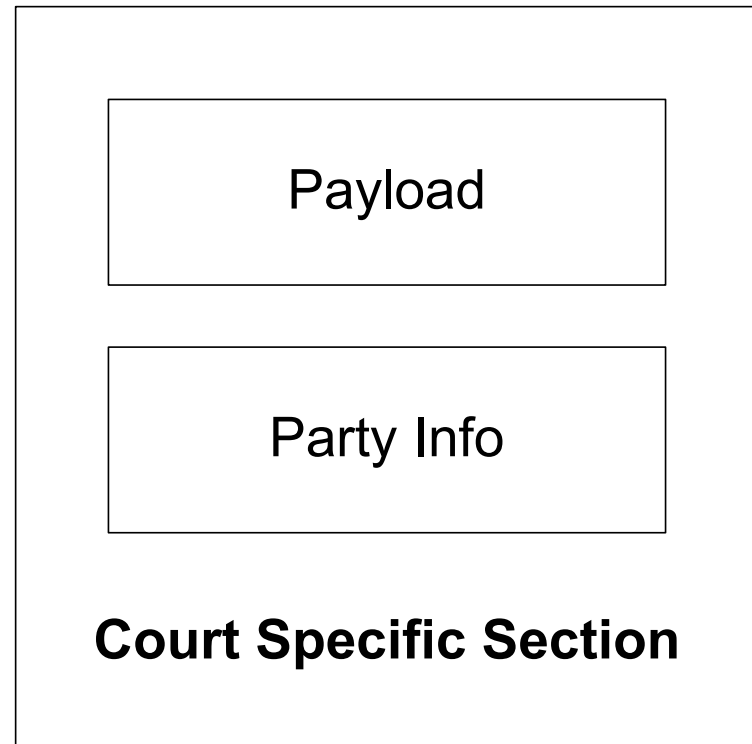
The Core Filing section describes the Filing

- The Core Filing section has three subsections:
 - Message and Case
 - Lead Document
 - Associated Documents
- The CoreFiling is used to route the filing to the Docketing Clerk
- The Core Filing Section contains:
 - Court, Venue, Firm ID, Filing Date/Time, Filing Lead Document Filename, Document Sequence Number, Document Type and Tracking Number.
- The Lead Document and Associated Documents sections contain the documents (RTF, TIF or PDF)



The Court Specific section contains the Filing Data

- The Court Specific Section (Filing Data) has two subsections:
 - Payload
 - Party Info
- Each of the Payload and Party Info subsections are presented to the Clerk at the time of Docketing
- Clerk moves this information into the Civil case management system
 - ACMS
- Future plans are to automatically docket certain documents with no clerk intervention



Data Rules Manager

- Data elements for the Payload and Party Info are defined via a Data Rules Manager application
- Rules are defined via regular expressions and scripts
- Rules are contained within an XML document which are consumed by the Attorney Filer and internal applications
- Rules are versioned and can be changed with no application changes
- Attorney Firms have access to the data rules if they need to automate the creation of the required data payloads

Sample Court Specific Section (part one)

- The Court Specific Section contains the <payload> (shown) and <parties> XML sections
- The <Payload> contains the data for the selected Document Type for a Court and Version

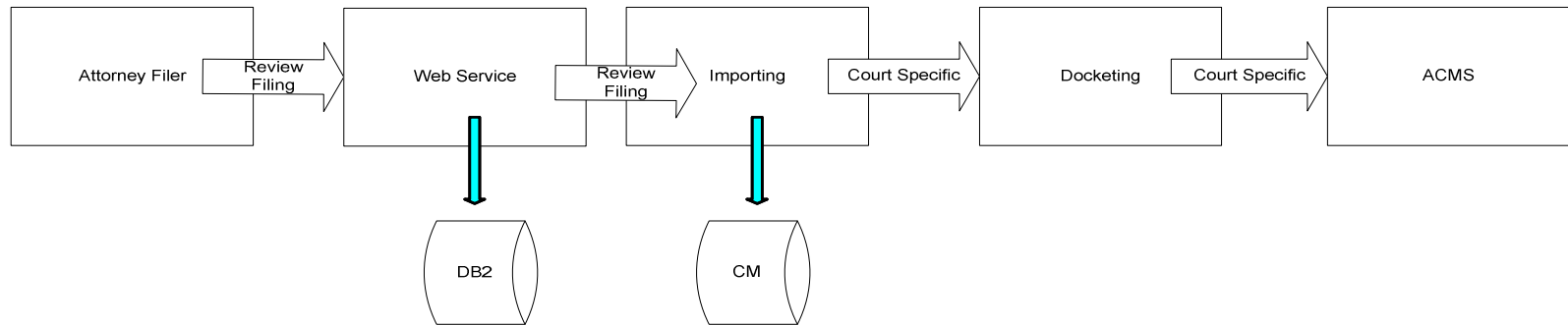
```
- <CourtSpecificMessage xmlns="urn:oasis:names:tc:legalxml-courtfiling:schema:xsd:CourtSpecificMessage-3.1" xmlns:xsd="http://www.w3.org/2001/XMLSchema"
  xmlns:jxdm="http://www.it.ojp.gov/jxdm/3.0.3" xmlns:jxsd="http://www.it.ojp.gov/jxdm/3.0.3/proxy/xsd/1.0" xmlns:i="http://www.it.ojp.gov/jxdm/appinfo/1"
  xmlns:common="urn:oasis:names:tc:legalxml-courtfiling:schema:xsd:CommonTypes-3.1" xmlns:message="urn:oasis:names:tc:legalxml-
  courtfiling:schema:xsd:MessageTypes-3.1" xmlns:xsi="http://www.w3.org/2001/XMLSchema-instance" xsi:schemaLocation="urn:oasis:names:tc:legalxml-
  courtfiling:schema:xsd:CourtSpecificMessage-3.1../xsd/message/ECF-3.1-CourtSpecificMessage.xsd">
- <payload>
- <efiling>
  - <fields documentType="Complaint" court="scp" venue="PAS" docketNumber="SCPPAS08" collateralAccount="primary, test123" caseTitle="" version="1">
    <field id="Case ID *" mapId="caseID">1234</field>
    <field id="Document Date *" mapId="documentDate">1234</field>
    <field id="Case Type *" mapId="caseType">1234</field>
    <field id="Service Type *" mapId="serviceType">Type 4</field>
    <field id="Init Document *" mapId="initDocument">Init 1</field>
    <field id="Jury Demand *" mapId="juryDemand">Yes</field>
    <field id="Demand Amt $" mapId="demandAmount">123</field>
    <field id="Summons Fee $" mapId="summonsFee">123</field>
    <field id="Service Fee $" mapId="serviceFee">123</field>
    <field id="Attorney Fee $" mapId="attorneyFee">123</field>
    <field id="Total $" mapId="total">123</field>
    <field id="Amt Recvd/Debit $" mapId="amtRecvdDebit">123</field>
    <field id="Change Ref $" mapId="changeRef">Yes</field>
  </fields>
</efiling>
</payload>
```

Sample Court Specific Section (part two)

- The <parties> tags contain the Party Data.

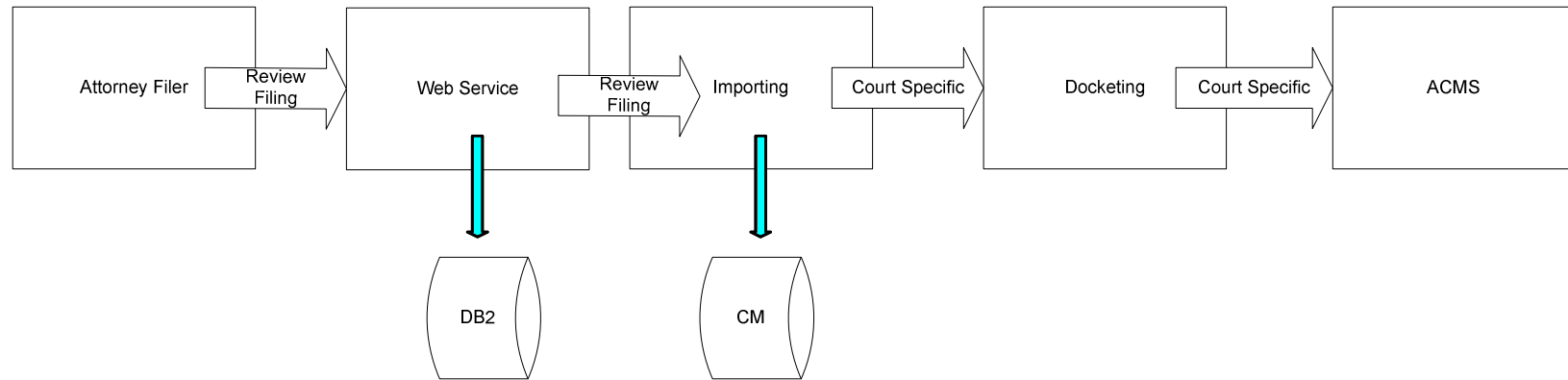
```
- <parties newParties="2" associatedParties="0" newPlaintiffs="1" newDefendants="1" associatedPlaintiffs="0" associatedDefendants="0">
- <party partyType="New Party">
- <efiling>
- <fields partyType="new party" documentType="Party" court="scp" venue="PAS" version="1">
  <field id="Role" * mapId="role">Plaintiff</field>
  <field id="Last Name or Company" * mapId="lastName">1234</field>
  <field id="First Name" * mapId="firstName">1234</field>
  <field id="Middle Initial" * mapId="middleInitial">1234</field>
  <field id="Affiliation Code" * mapId="affiliationCode">1234</field>
  <field id="Party To Initial Complaint" * mapId="partyToInitialComplaint">1234</field>
  <field id="Address" * mapId="address">1234</field>
  <field id="Address" mapId="address2" />
  <field id="City" * mapId="city">1234</field>
  <field id="State" * mapId="state">1234</field>
  <field id="Zip" * mapId="zip">1234</field>
  <field id="Phone" * mapId="phone">1234</field>
  <field id="Alt Plaintiff Code" mapId="altPlaintiffCode" />
  <field id="Alt Last Name" mapId="altLastName" />
  <field id="Alt First Name" mapId="altFirstName" />
  <field id="Alt Middle Initial" mapId="altMiddleInitial" />
  <field id="Additional Alt Names" mapId="additionalAltNames" />
</fields>
</efiling>
</party>
- <party partyType="New Party">
- <efiling>
- <fields partyType="new party" documentType="Party" court="scp" venue="PAS" version="1">
  <field id="Role" * mapId="role">Defendant</field>
  <field id="Last Name or Company" * mapId="lastName">1234</field>
  <field id="First Name" * mapId="firstName">1234</field>
  <field id="Middle Initial" * mapId="middleInitial">1234</field>
  <field id="Affiliation Code" * mapId="affiliationCode">1234</field>
  <field id="Party To Initial Complaint" * mapId="partyToInitialComplaint">1243</field>
  <field id="Address" * mapId="address">1243</field>
  <field id="Address" mapId="address2" />
  <field id="City" * mapId="city">1234</field>
  <field id="State" * mapId="state">1234</field>
  <field id="Zip" * mapId="zip">1234</field>
  <field id="Phone" * mapId="phone">1234</field>
  <field id="Alt Plaintiff Code" mapId="altPlaintiffCode" />
  <field id="Alt Last Name" mapId="altLastName" />
  <field id="Alt First Name" mapId="altFirstName" />
  <field id="Alt Middle Initial" mapId="altMiddleInitial" />
  <field id="Additional Alt Names" mapId="additionalAltNames" />
</fields>
</efiling>
</party>
</parties>
</CourtSpecificMessage>
</types:ReviewFiling>
</env:Body>
</env:Envelope>
```

Attorney Transmits a “Review Filing” message



- Attorney creates a Review Filing message via the Attorney Filer application and transmits via our Web Service - package is stored in DB2
- The Review Filing message contains Routing (Core Filing message) and Filing Data (Court Specific Data)

The Review Filing Message passes through JEFIS to ACMS



- Importing application polls and parses incoming messages for data and attachments - Stores to Content Manager (CM) System
- Review Filing Message routes the type of filing to the appropriate Docketing Queue
- The Court Specific portion of the message is used to populate the Docketing Data Grids with filing data
- Docketing Queues are used by Court Clerks to access incoming filings and docket into ACMS.