

# King County, Washington

## Summary Report: Felony and Misdemeanor Cases Superior Court



### Project Overview

The goal of the ECCM project is to discover, document, and disseminate effective criminal case management practices in state trial courts to help reduce delay and cost and improve the quality of justice. More than 90 courts are participating. Case-level information from the most recent 12-month period available was collected from each court for disposed felony and/or misdemeanor cases.

### Case Types

Cases were classified into a set of case types determined by the most serious charge at filing. In order of severity, the case types are:

- Homicide (e.g., murder, manslaughter)
- Person offense (e.g., assault, robbery)
- Property offense (e.g., burglary, larceny)
- Drugs (e.g., manufacture, sale, use)
- Weapons (e.g., illegal possession)
- Driving While Intoxicated (e.g., DUI)
- Other motor vehicle (e.g., reckless driving)
- Legal process (e.g., bail, probation violation)
- Public order (e.g., disorderly conduct, vagrancy)
- Other felony/other misdemeanor

### Case Counting Rules

A case is defined as a single defendant and all charges arising from a single incident. The data set includes a single record for each case. For cases involving multiple charges against a single defendant, the data was condensed to produce a single record based on the most serious charge at filing and disposition.

### Active Time to Disposition

The recommended measure of case processing time excludes those time periods over the life of a case where the case is out of court control and no progress can be made (inactive time). For criminal cases this typically arises when a defendant fails to appear in court. When possible, we show active time to disposition, calculated by subtracting the inactive time from the total case processing time.

### King County Court Description

Population of County (2015): 2,117,125

Population Rank: 13th largest by population of the 3,142 U.S. counties

Type of Court & Data Available: Two-tier/GJ: felony data only

Judge Selection: Non-partisan election

### Measuring Case Processing Time using the National Model Time Standards

#### Felonies

- 90% within 180 days
- 98% within 365 days

#### Misdemeanors

- 90% within 90 days
- 98% within 180 days

Time standards set expectations for timely case processing and provide a benchmark for assessing court performance. The **National Model Time Standards** (NCSC, 2011) for felony and misdemeanor cases are used here to provide time goals for resolving 90% and 98% of cases. In addition, the *mean* (average) and *median* (midpoint) days to disposition give insight into the more typical time taken to resolve cases. The *overall mean* for all ECCM sites is also included for comparison. When the % of cases within 90/180/365 days are the same, only one value is shown.

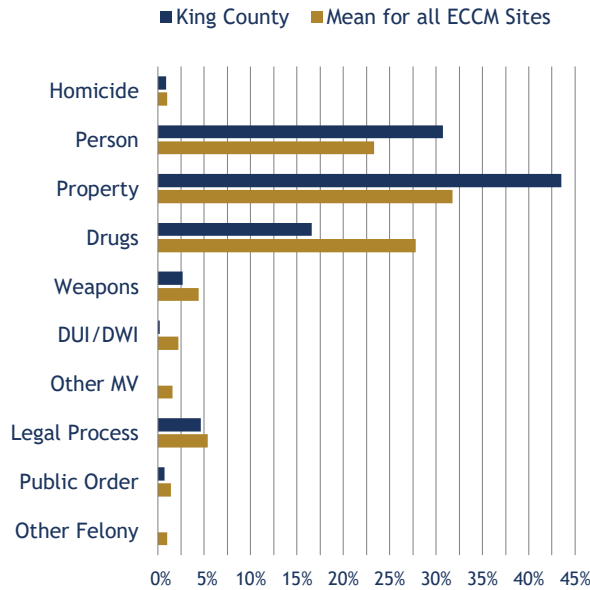
# King County, Washington

## Superior Court - Felony Cases

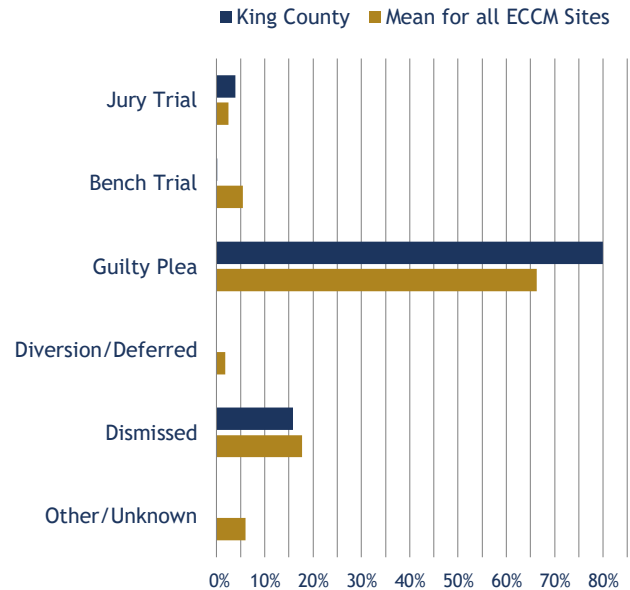
Total Felony Cases: 6,253



### Caseload Composition



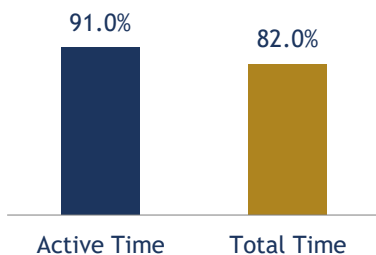
### Manner of Disposition



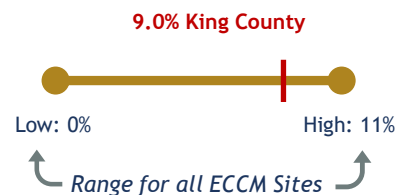
### Active Time from Filing to Disposition All ECCM Sites in Washington

County/Site	Total Cases	% within 180 days	% within 365 days	Mean # of days	Median # of days
King County	6,253	71%	91%	166	114
Pierce	4,557	78%	96%	121	85
Spokane	4,291	62%	84%	226	126
Mean for all ECCM Sites	3,676	63%	86%	213	135

### % Disposed within 365 Days Active Time vs. Total Time



### % Difference between Active and Total Time



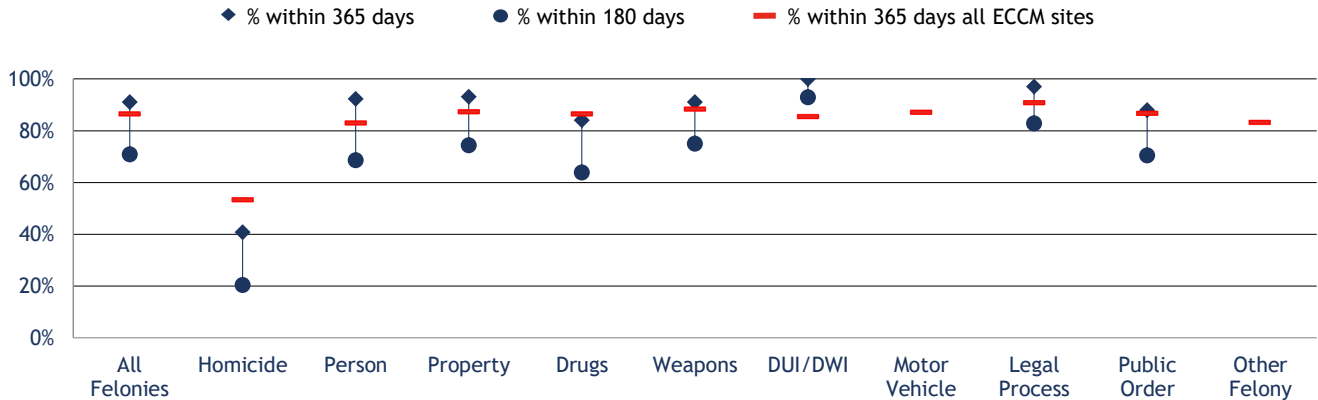
# King County, Washington

## Superior Court - Felony Cases

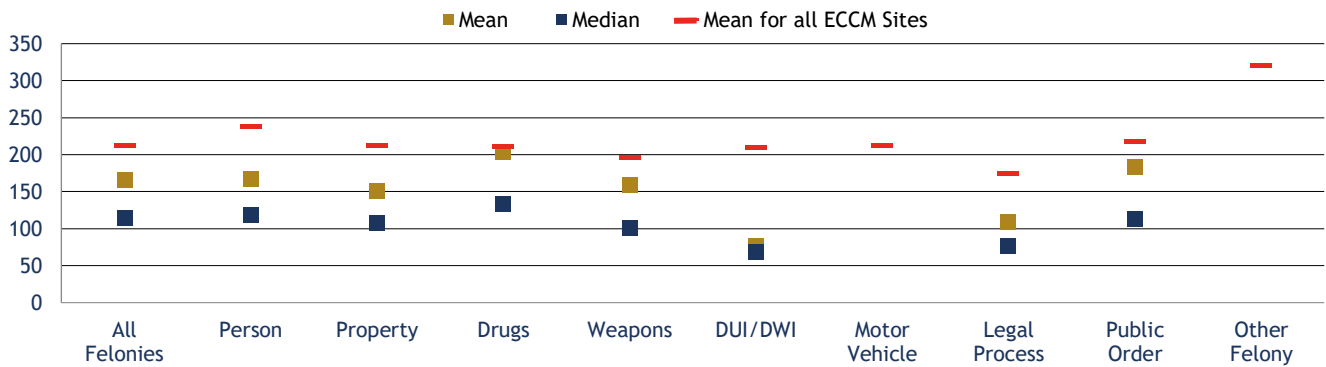
Total Felony Cases: 6,253



**% Disposed Within 180 and 365 Days by Case Type (Active Time)**

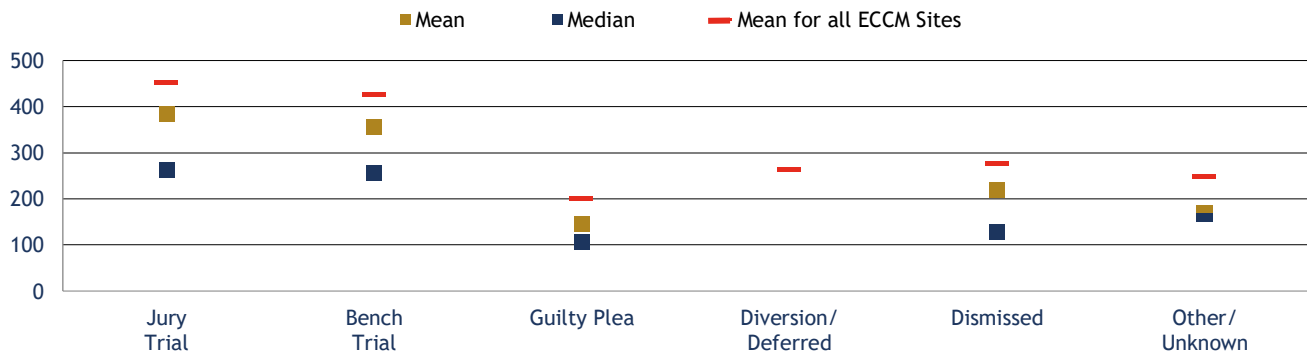


**Disposed Cases: Mean and Median Days by Case Type (Active Time)**



Note: Homicide mean = 536; median = 432. Mean for all ECCM sites = 468.

**Mean and Median Days by Manner of Disposition (Active Time)**

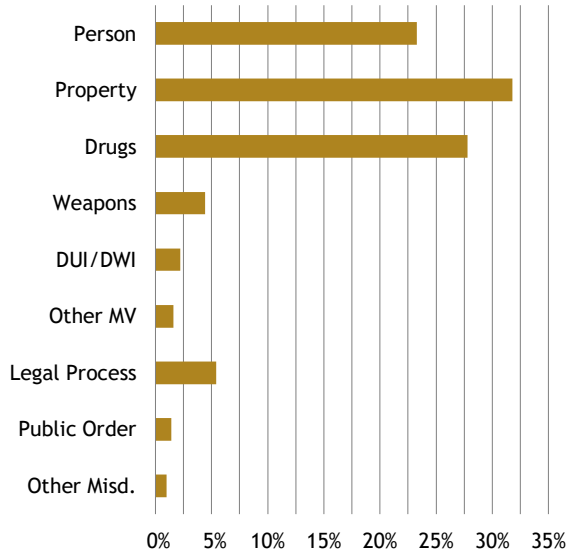


# Aggregate Findings for All ECCM Sites

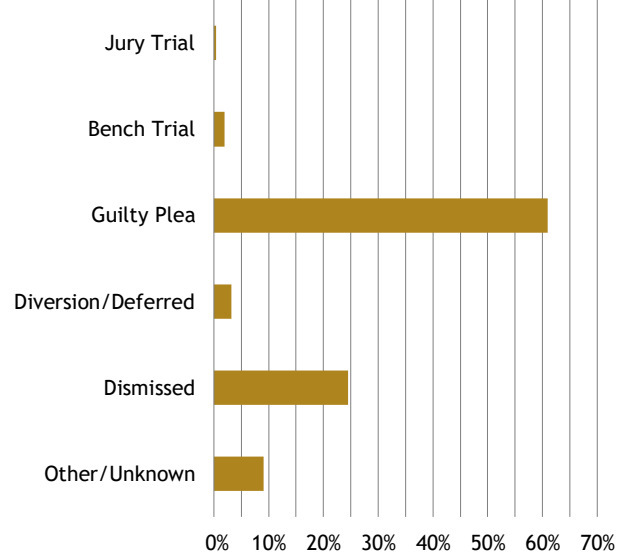
## Misdemeanor Caseloads



Caseload Composition



Manner of Disposition



Active Time from Filing to Disposition

County/Site	Average # of Cases per Site	% within 90 days	% within 180 days	Mean # of days	Median # of days
All ECCM Sites	12,186	52%	75%	158	91

Percentage of Misdemeanor Cases Resolved Within:

Case Type	90 Days	180 Days
Person	43%	70%
Property	55%	77%
Drugs	51%	76%
Weapons	44%	68%
DUI/DWI	32%	61%
Other MV	52%	74%
Legal Process	51%	73%
Public Order	55%	77%
Other Misd.	43%	66%
<b>All Misdemeanors</b>	<b>52%</b>	<b>75%</b>

Number of Active Days from Filing to Disposition

Manner of Disposition	Mean Days	Median Days
Jury Trial	371	331
Bench Trial	295	273
Guilty Plea	143	104
Diversion/Deferred Adj.	178	147
Dismissed	231	117
Other/Unknown	158	75