

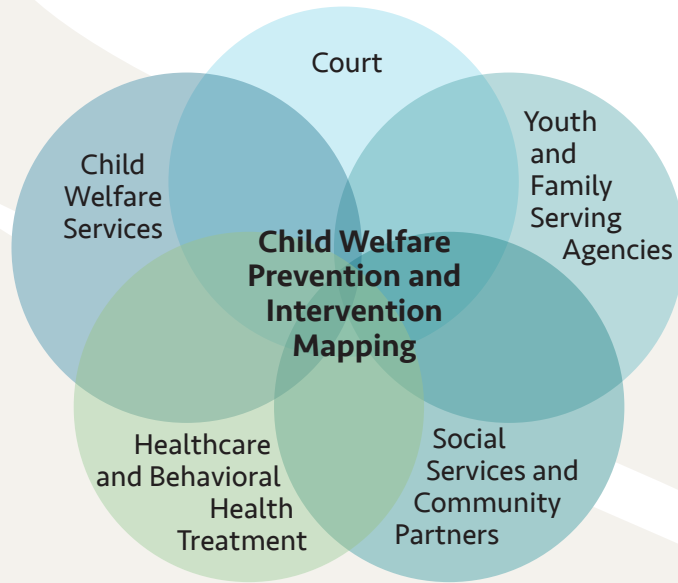


## Upstream

### Strengthening Children and Families through Prevention and Intervention Strategies: A Court and Community-Based Approach

Upstream provides a court and community-based approach to strengthen families that is proactive, holistic, and focuses on keeping children safely with their families.

Developed by the National Center for State Courts, Upstream brings together local stakeholders for a series of action-oriented working meetings. Using an approach informed by the *Sequential Intercept Model*,\* stakeholders collectively map the local child welfare landscape by identifying resources and gaps in services, mapping the processes, and creating an action plan to enhance collaboration within and across systems.



Child welfare intervention mapping brings together local stakeholders to collectively:

Create a map of the child welfare landscape

Identify local resources and gaps in services

Determine priorities for change

Develop an action plan

Enhance collaboration among community partners and across systems

Reduce risk of child welfare system involvement for children and families

Support safe, nurturing, and permanent homes for children

## Points of Prevention and Intervention

### PRIMARY PREVENTION

Community Services and Supports	Economic Supports for Families	Social Supports for Families	Healthcare	Childcare and Education	Parenting Education to Promote Healthy Child Development	Youth Connections to Caring Adults and Activities
---------------------------------	--------------------------------	------------------------------	------------	-------------------------	--	---

SECONDARY PREVENTION	INTERVENTION	CRISIS INTERVENTION	CHILD WELFARE	COURT	AFTERCARE
Enhanced Healthcare		Emergency Medical Services and Acute Behavioral Health Treatment	Referral	Petition and Filing	Continuity of Needed Services
Victim-Centered Services for Children and Adult Survivors of Trauma		Emergency Shelters and Housing	Screening	Case Planning and Case Flow Management	Reentry Prevention
Supports to Lessen Harms of Abuse and Neglect Exposure		Domestic Violence Services	Assessment and Investigation	Specialty Courts	Safety Planning
Family-Centered Treatment for Behavioral Health Needs		Access to Legal Advocacy and Legal Processes	Safety Planning	Adjudication and Disposition	Exit Planning
Elevated and In-Risk Care Coordination, Services, and Supports		Education and Skill-Building	Services and Treatment		
			Referral to Court		

### CROSS-SYSTEMS COLLABORATION

Coalitions, Task Forces, and Coordinating Councils	Information Sharing and Care Coordination	Data Collection, Analysis, and Sharing	Cross-Training	Co-Located and Integrated Services	Shared Funding	<b>SHARED SUCCESSES</b>
--	---	--	----------------	------------------------------------	----------------	-------------------------

\*The Sequential Intercept Model is a framework and tool used to facilitate cross-systems collaborations that reduce the risk of criminal justice system involvement among people with behavioral health needs. Please see the Sequential Intercept Model [website](#) for more information.

